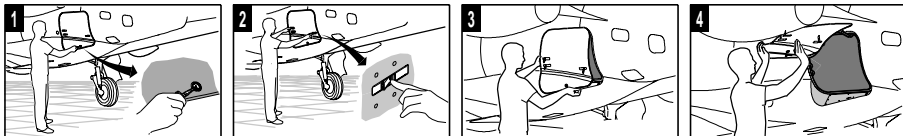


AIRCRAFT RESCUE & FIREFIGHTING INFORMATION

PHENOM 100
 FLIGHT CREW: 2
 PASSENGER: 4-5
 HEIGHT: 4,35 m – 14,27 ft
 WING SPAN: 12,30 m – 40,35 ft
 LENGTH: 12,82 m – 42,06 ft

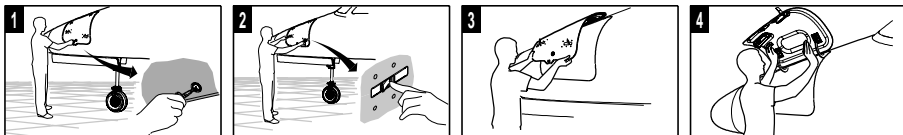
WING FUEL TANKS CAPACITY: 1610 L (425 Gal.)
 FUEL TYPE: ASTM D 1655 (JET A AND JET A1),
 MIL-DTL-83133 (JP-8)

AFT BAGGAGE DOOR



1 UNLOCK THE KEY LOCK.
2 PUSH THE LOCK TRIGGER OF ALL THREE LATCH PINS.
3 PULL THE LATCH HANDLE TO COMPLETE THE OPENING OF ALL THREE LATCHES.
4 PULL THE DOOR UPWARD.

FORWARD BAGGAGE DOOR

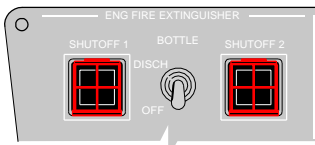


1 UNLOCK THE KEY LOCK.
2 PUSH THE LOCK TRIGGER OF BOTH LATCH PINS.
3 PULL THE LATCH HANDLE TO COMPLETE THE OPENING OF BOTH LATCH PINS. PUSH THE LOCK TRIGGER OF THE TENSION SHEAR LATCH.
4 PULL THE DOOR UPWARD.

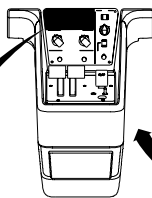
FIRE IN THE ENGINE

LIFT THE GUARD AND PRESS SHUTOFF 1 BUTTON OR SHUTOFF 2 BUTTON TO ACTIVATE THE FIRE EXTINGUISHING SYSTEM OF THE ENGINE

SET THE BOTTLE TOGGLE SWITCH TO THE DISCH POSITION TO RELEASE AGENT TO THE RESPECTIVE ENGINE



ENGINE CONTROL PANEL

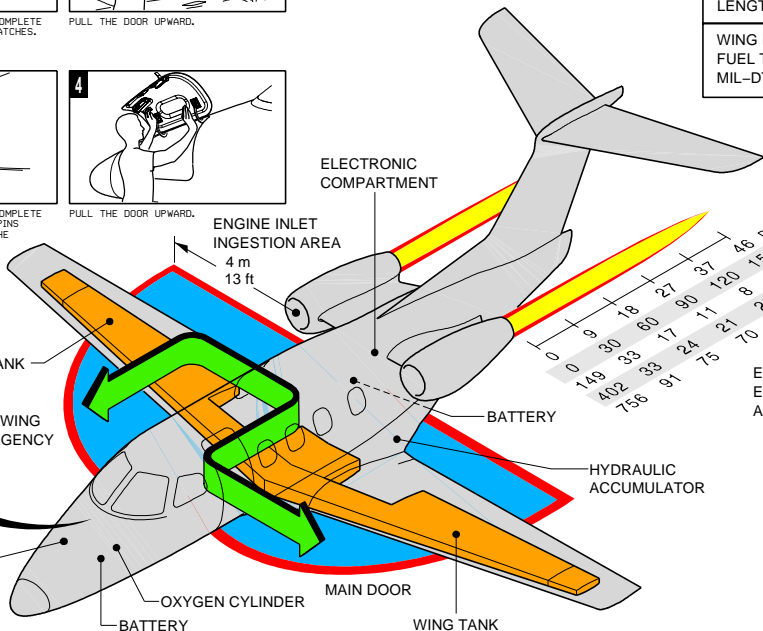


WING TANK

OVERWING EMERGENCY ONLY

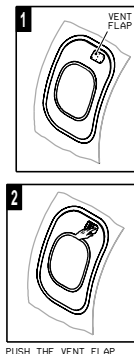
HYDRAULIC RESERVOIR AND HYDRAULIC ACCUMULATOR

BATTERY

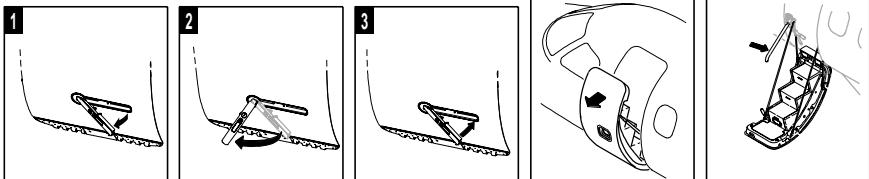


0	30	60	90	120	150	180	210	240	270	300	330	360
0	9	18	27	37	46	55	64	73	82	91	100	109
0	30	60	90	120	150	180	210	240	270	300	330	360
0	149	33	60	87	114	141	168	195	222	249	276	303
0	402	83	126	169	212	255	298	341	384	427	470	513
0	756	91	175	259	343	427	511	595	679	763	847	931

OVERWING EMERGENCY EXIT



MAIN DOOR



1 PUSH THE TRIGGER THEN PULL THE EXTERNAL HANDLE OUT.
2 HOLD THE DOOR AND ROTATE THE HANDLE CLOCKWISE TO ITS STOP TO UNLOCK THE DOOR.
3 PUT THE EXTERNAL HANDLE BACK INTO ITS FLUSH POSITION.
4 LET THE DOOR COME DOWN.
5 MOVE THE HANDRAIL DOWNWARD TO COMPLETE THE DOOR ROTATION MOVEMENT.

PHENOM® 100E
 BY EMBRAER

EMBRAER MAKES NO WARRANTY OR GUARANTEE WHATSOEVER IN CONNECTION WITH THE INFORMATION FURNISHED IN THIS DOCUMENT ON THE USE OR IMPLEMENTATION OF SUCH INFORMATION, AND THE USER OF THIS DOCUMENT ASSUMES ALL LIABILITY AND RESPONSIBILITY FOR ANY AND ALL INFORMATION, INCLUDING BUT NOT LIMITED TO ANY IMPLIED WARRANTY OF MERCHANTABILITY OR FITNESS FOR A PARTICULAR PURPOSE, ANY AND ALL INFORMATION RECEIVED FROM OTHERS, PERFORMANCE, COURSE OF DEALING OR USAGE THEREOF, AND CONSTRUCTION, LIABILITY, RIGHT, CLAIM OR REMEDY IN CONTRACT OR TORT, WHETHER OR NOT CAUSED BY OR ARISING OUT OF, IN CONNECTION WITH, THIS DOCUMENT, INCLUDING, BUT NOT LIMITED TO, ANY AND ALL INFORMATION, LIABILITY, RIGHT, CLAIM OR REMEDY IN CONTRACT OR TORT, WHETHER OR NOT CAUSED BY OR ARISING OUT OF, IN CONNECTION WITH, THIS DOCUMENT.